

host. store. share.  
photobucket



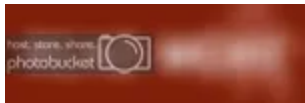
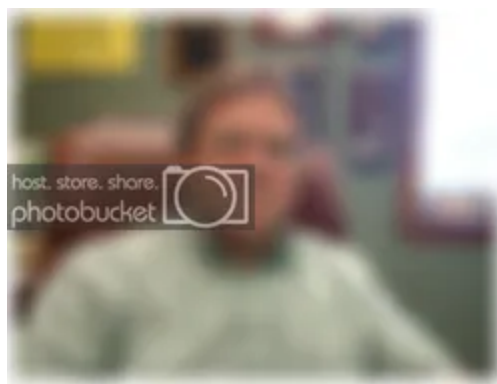
WAYS



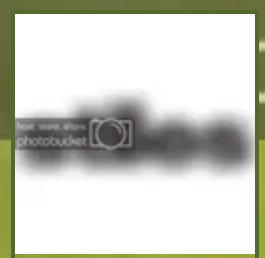
Fall 2016

### Beginning of Story 1 **President's Message: Busy Times**

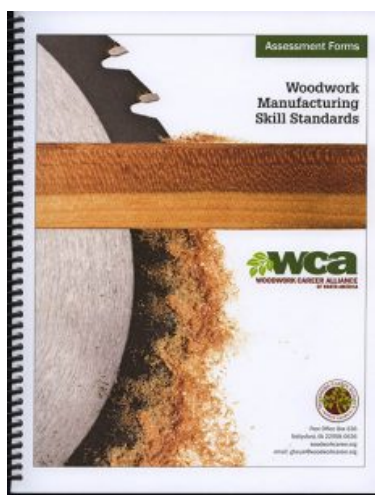
A lot has happened between the release of our first **WCA Pathway's** newsletter in July and this second installment. IWF 2016 was a huge success for the Woodwork Career Alliance and the attendance at our booth was overwhelming at times. The roll out of our new Woodwork Manufacturing Skill Standards book and Passport were welcomed with great enthusiasm!



### THANKS SPONSORS!

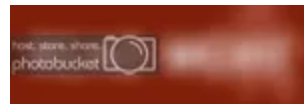


<< SEE ALL WCA SUPPORTERS >>



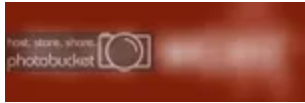
### Woodwork Career Alliance Updates Skill Standards, Redesigns Credential Passport

The Woodwork Career Alliance of North America (WCA) announces the release of the 2nd Edition Woodwork Manufacturing Skill Standards, the most significant update to the industry-accepted skill standards since they debuted in 2011.



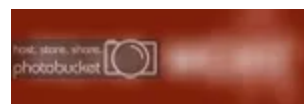
### Skill Standards Are Flooring Maker's Passport to Success

The North Troy, VT, company has experienced a dramatic decrease in employee turnover since implementing the Wood Career Alliance's Skill Standards and related Passport program in 2014. Along with workforce stability have come enhanced quality and increased productivity.



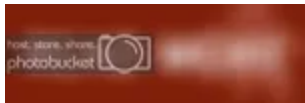
### WCA Slates Skill Evaluator Training Sessions

The Woodwork Career Alliance of North America, in its ongoing efforts to proactively address the woodworking industry's critical skilled worker shortage, has scheduled a trio of events to train and certify Accredited Skill Evaluators.



### Industry Donors Add Value to WCA Education Membership

They each support Woodwork Career Alliance Education™ by participating in the Essentials™ Donor program for the academic year running through June 30, 2017.



<< SHARE YOUR NEWS & VIEWS >>

[Home](#) | [Forums](#) | [FAQ](#) | [LinkedIn](#) | [Contact Us](#)

Share this email:



[Manage](#) your preferences | [Opt out](#) using TrueRemove™  
Got this as a forward? [Sign up](#) to receive our future emails.  
View this email [online](#).

PO BOX 636  
Nellysford, VA | 22958-0636 US

This email was sent to .  
To continue receiving our emails, add us to your address book.



[Subscribe](#) to our email list.